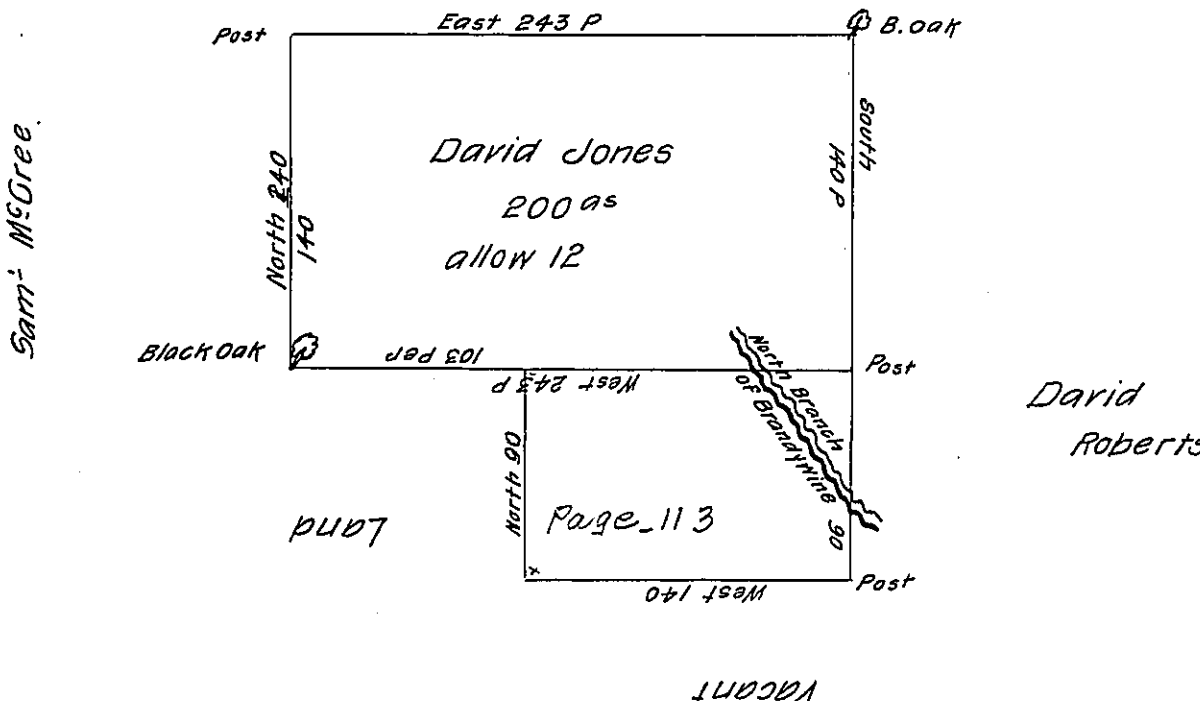


243	140
140	90
<hr/>	
9720	12600
243	
<hr/>	
34020	
12600	
<hr/>	
106/4662000	43981
42462	1174
1081	1
	274 ³ / ₄

Tho^s Eldridge



By Virtue of a Warrant from the Proprietaries dated the 16th day of

January 1733. Surveyd unto David Jones the 22^d of the same month A tract of Land in Caln—in the County of Chester. Beginning at a Post at a corner of Thomas Eldridge's Land then by ye same & Vacant land East 243 Pches to a Black Oak. thence South 140 Pches to a Post then West 243 Pches to a Black Oak, thence North by Samuel McGree's Land 140 Pches to the Place of Beginning. Containing two hundred acres and the allowance of six P. Cent

Jn^o Taylor

the whole contains 274^{as}: 141 Per & allowance

IN TESTIMONY that the above is a copy of the original remaining on file in the Department of Internal Affairs of Pennsylvania, made conformably to an Act of Assembly approved the 16th day of February, 1833, I have hereunto set my Hand and caused the Seal of said Department to be affixed at Harrisburg, this seventh day of April 1905.

James B. Brown
 Secretary of Internal Affairs.